

Island Location World Class Service



marineservices.je | 



PORTS OF JERSEY
MARINE SERVICES

+ Introducing the Duke of Normandy

The Duke of Normandy is a 26m Damen Shoalbuster 2609 which provides a wide range of marine services from towage, mooring maintenance and anchor handling to bed levelling, survey and engineering support in some of the most challenging environmental conditions in Northern Europe.

SPECIFICATION

Lifting Ops. 17T@8m and 5T@18m

4 Point Mooring System

A Frame

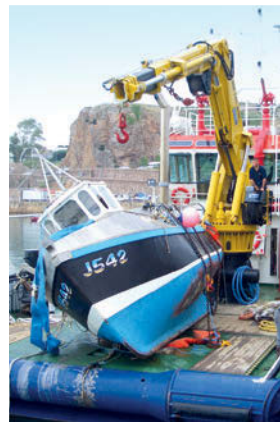
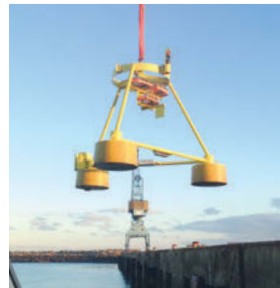
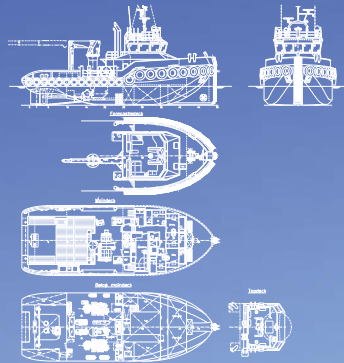
Deck Containers for ROV/Dive Support

Dredging Plough

Survey Pole

28.3 Tonnes Bollard Pull

Fifi Monitors 600m³/hr



Welcome to Ports of Jersey Marine Services. Our leading-edge equipment and wealth of experience allows us to provide the following services:

- + Renewable Energy Support
- + ROV, Survey and Dive Support
- + Mooring, Maintenance and Anchor Handling
- + Bed Levelling and Dredge Support
- + Towing and Pushing
- + Salvage
- + Engineering and Project Management
- + Hydrographic Services

+ Renewable Energy Support

Experience in deploying seabed frames, weather buoys, floating lidars, ROV surveys and dive support for renewable energy projects. Vessel is equipped with a four-point mooring system that provides safe station keeping for inspection and maintenance work. Vessel and crew have extensive experience working in large tidal areas around the Channel Islands and beyond.

+ Dive/ROV/Survey Support

The 17 tonne deck crane and A-frame allow for the safe deployment of a range of sub-sea survey instruments, including cameras, ROVs and Geotechnical samplers. An over-the-side pole can be mobilised to deploy a range of sensors and transducers.

The Duke of Normandy is an ideal platform for commercial dive teams, with space on deck for a dive control container, which has power, light and heating. The vessel also has its own dive ladder and platform and the four point mooring system can be very useful for certain ROV and Dive projects.

+ Mooring, Maintenance and Anchor Handling

From servicing small moorings for leisure vessels, to deploying large multi-point mooring spreads for tidal turbine deployment, the Duke of Normandy and her crew have unique experience working in confined waters and large tidal ranges.



+ Bed Levelling and Dredge Support

The Duke of Normandy has an 8m wide bed-levelling plough which is rigged and levelled with the use of cable counters. This can be used either as a standalone operation or in support of maintenance dredge operations, and can be validated by in-house hydrographic surveys using our R2Sonic 2024 multibeam system.

+ Towing and Salvage

Our 26m Damen Shoalbuster tug has a shallow draft and 28t bollard pull which can provide coastal towing & transportation in support of dredging, engineering & construction projects. It can also assist with salvage/rescue of vessels at sea and assistance with berthing of large ships in high winds within the confines of a port.

In addition to towing and dive support, we have the ability to salvage sunken vessels utilising the 17t deck crane, and high volume salvage pumps.

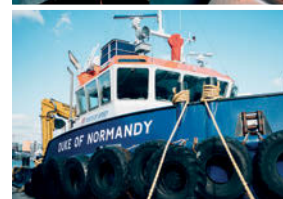
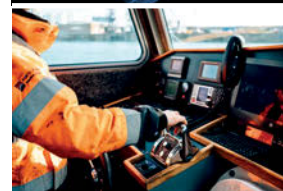
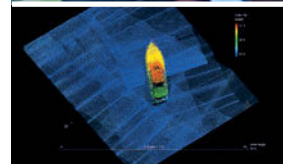
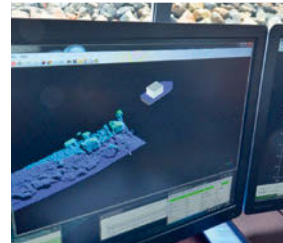
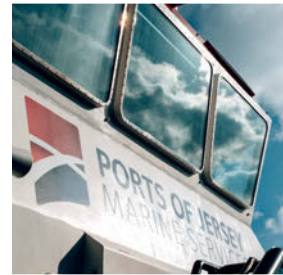
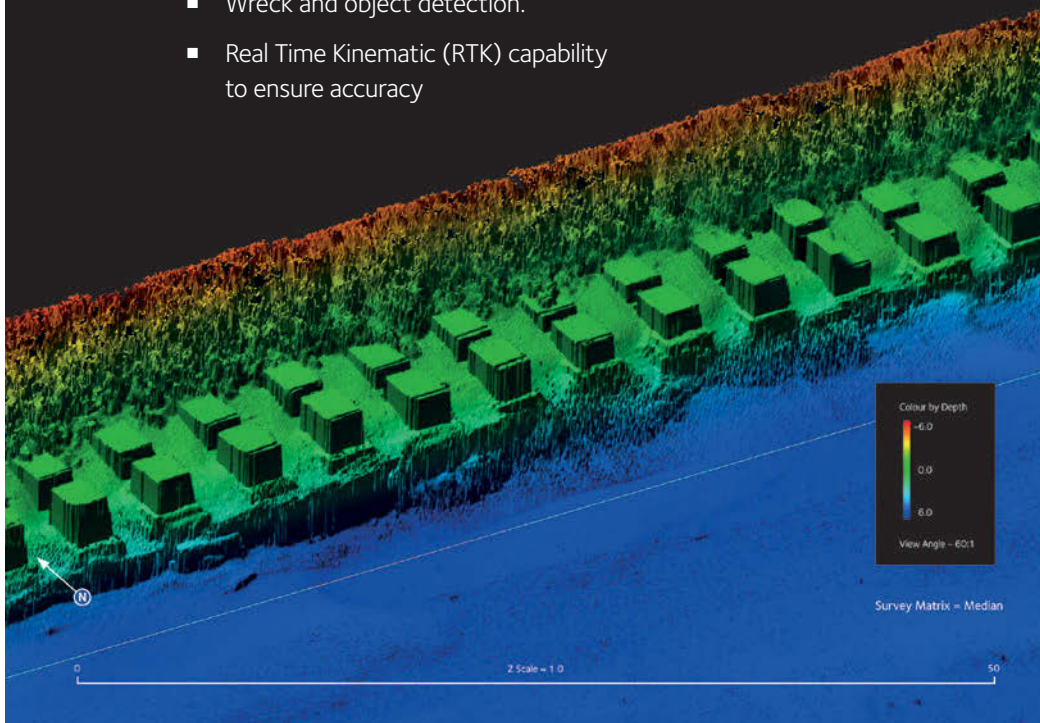
+ Engineering Support and Project Management

Ports of Jersey have a wide range of highly qualified and experienced engineers and project managers to ensure your engineering and infrastructure projects run smoothly. Previous experience includes link span installations, port and marina infrastructure upgrades, dredge project management and sea defences.

+ Hydrographic Services

We offer high specification multibeam surveys using our R2Sonic 2024 Multibeam Echo Sounder and SBG Systems Inertial Navigation System, as well as vessel mounted LiDAR capabilities. This survey system can be quickly mounted onto our own survey vessel, or vessels of opportunity to offer fast reaction surveys as well as planned campaigns. We have experience working on behalf of local port authorities and utility companies.

- Bathymetric Surveys to IHO Special Order standard
- Engineering and Infrastructure support i.e. quay wall inspections
- Port and Harbour surveys
- Cable and Pipeline inspections
- Dredge support surveys, including volume calculations
- Wreck and object detection.
- Real Time Kinematic (RTK) capability to ensure accuracy



Why Jersey?

- + 24/7 berthing access
- + 24/7 pilotage service
- + Vessel Agents
- + Bunkers, stores and chandlery supplies
- + Engineering and maintenance services
- + TYHA Gold Anchor marinas
- + Central location in Bay of St Malo
- + Ships Registry
- + Statutory Certification services
- + Excellent sea and air transport links for crew changes



To discuss what Ports of Jersey
Marine Services can do for
you in detail, please contact:

T +44 (0)1534 447720

E marineservices@ports.je



marineservices.je | 



PORTS OF JERSEY
MARINE SERVICES